

**Feature**

- ☆  $\pm 0.5, \pm 1\%$  F.S Accuracy
- ☆ High stability, High reliability
- ☆ Ceramic sensor from Germany
- ☆ Multiple connectors and ports
- ☆ CE, RoHS approved

**Application**

- ☆ Compressor
- ☆ Building water supply
- ☆ Hydraulic control
- ☆ Air conditioner
- ☆ Auto Engine
- ☆ Automatic detecting system
- ☆ Hydraulic pressure station
- ☆ Refrigerator

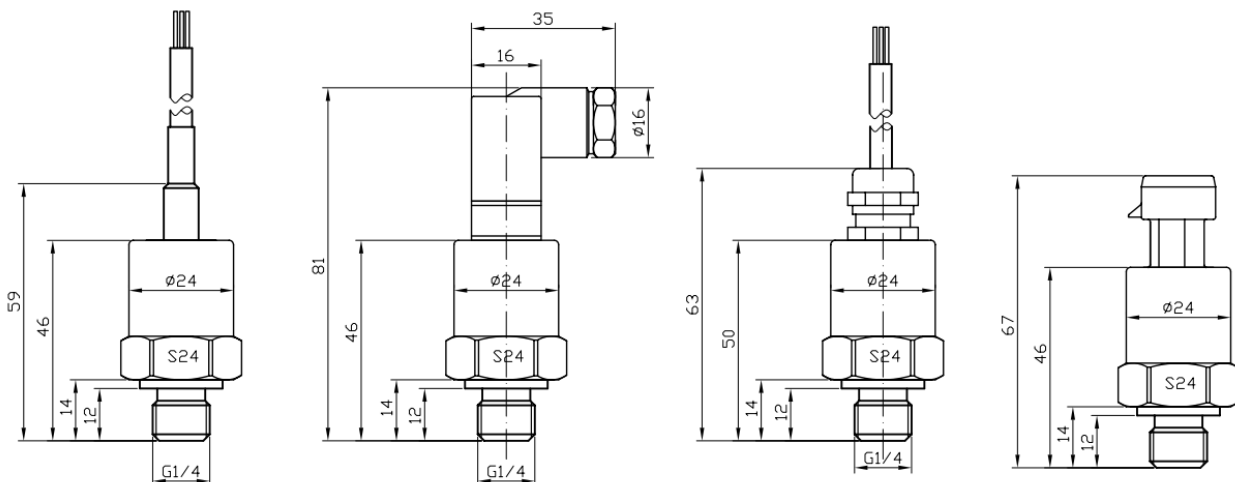
**Description**

TPZ 1200 series of pressure transmitters feature high quality, high stability, small size, low weight, compact structure, low cost and mass production. The products are widely used to measure pressure of air compressors, auto engines, air conditioning equipment, etc.

Stainless steel housings are ideal for industrial environment. Pressure sensing elements are selected from well known international brands. The products have been approved with CE, intrinsically safe, and explosion-proof certificates.

Non-polar two-wire current and three-wire voltage output are provided.

Products are produced according to military standards of advanced design, perfect technology, scientific management, strict production and quality control and have been sold to over 50 countries.



Parameter	Value			Note
Measurement range	0~2bar.....600bar			1bar=100kpa
Overload pressure	1.5 * pressure range			
Broken pressure	3 * pressure range			
Accuracy	±0.5%F.S    ±1%F.S			
Stability	Typical 0.5% F.S,        maximum: 1 %F.S			
Operating temperature	-40~100 (Deg. C)			
Compensation temperature	-10~80 (Deg. C)			
Medium compatibility	Corrosive medium compatible with 1Cr18Ni9Ti,Ceramic			
Wires	Two-wire	Three-wire		
Output signal	4~20mA	0.5-4.5V		
Supply voltage	10~30Vdc	5Vdc	10-30Vdc	
Load resistance	(U-10)/0.02(Ω)	>100KΩ		
Insulation	>100M Ω@50V			
Electrical connection	DIN43650A/C, Packard,M12 Seial, Cable			
Shell/Wire protection	IP67			
Pressure form	Gauge G, Absolute A			
Pressure port	G1/2   G1/4   NPT1/4   M20×1.5   7/16-20UNF			
Response time	10ms			
Certification	CE,Intrinsic-safety explosion E, Isolated explosion-proof D			
EMC	EMI:EN50081-1/-2, EMS:EN50082-2			

### Type Selection Guide

TPZ 1200

#### Type mark

A,V1, V2, KX,

#### Range

K=kPa,M=Mpa,P=PSI,B=bar

#### Accuracy Level

0.5=0.5%F.S. 1=1%F.S

#### Electrical Connection

P=Packard,D=DIN 43650,M=M12,C=Cable

#### Pressure Port

G1=G1/2 ,G=G1/4,N= NPT1/4    M=M20×1.5    U= 7/16-20UNF

TPZ 1200A - Current

TPZ 1200V- Voltage

TPZ 1200W-Especially for frequency water supply

#### Pressure Form

G=gague

A=absolute

#### Cable Length X(m)